



**SAS INSTITUTE**  
CARY, NC

ARCHITECT  
DAVIS KANE ARCHITECTS,  
RALEIGH, N.C.

GC  
MCLAUGHLIN ERECTORS, INC.,  
KEMAH, TX

OWNER  
SAS INSTITUTE, INC., CARY, NC  
MANUFACTURER

CPI DAYLIGHTING, INC.  
CPI REPRESENTATIVE  
DEMAT CO. INC., CHARLOTTE, NC

# CPI DAYLIGHTING *solutions*



## A BEACON OF DAYLIGHT

After 14 years, the 19,000-sq.-ft. skylight atop SAS Institute's Building R had begun to discolor and deteriorate. The atrium itself appeared yellow as the Cary, N.C. sun permeated the skylight, while leakage at the juncture where the sloping panels met the vertical elevator shaft led to an endless need for repairs.

Drawing on the success of other CPI Daylighting installations on their campus, business analytics software manufacturer SAS chose to renovate the space with 19,395 sq. ft. of 4-in.-thick Quadwall translucent sandwich panel. Specifying such a thick system provided the building with more insulation and allowed the skylight to continue for longer stretches with fewer support beams, creating a more seamless look.

"CPI has the best product out on the market," said Dale Darnall, chief operations officer for McLaughlin Erectors, Inc. (MEI), the project's installer. "The Quadwall glazing gave SAS the light they wanted in their R and D building. The material is durable and can hold up to the weather conditions that the region receives. CPI has tested products and SAS wanted a proven product installed."

Before the daylighting system could be installed, however, designing a system to block any future water seepage was a must. CPI placed a triangle-shaped diverter on top of the Quadwall glazing system to re-direct any water into the side gutter with an EPDM liner as a second barrier. The massive installation began in July of 2008 and lasted just two months thanks to the custom 45-ft. long panelized Quadwall system that helped make the accelerated project timeline a reality.

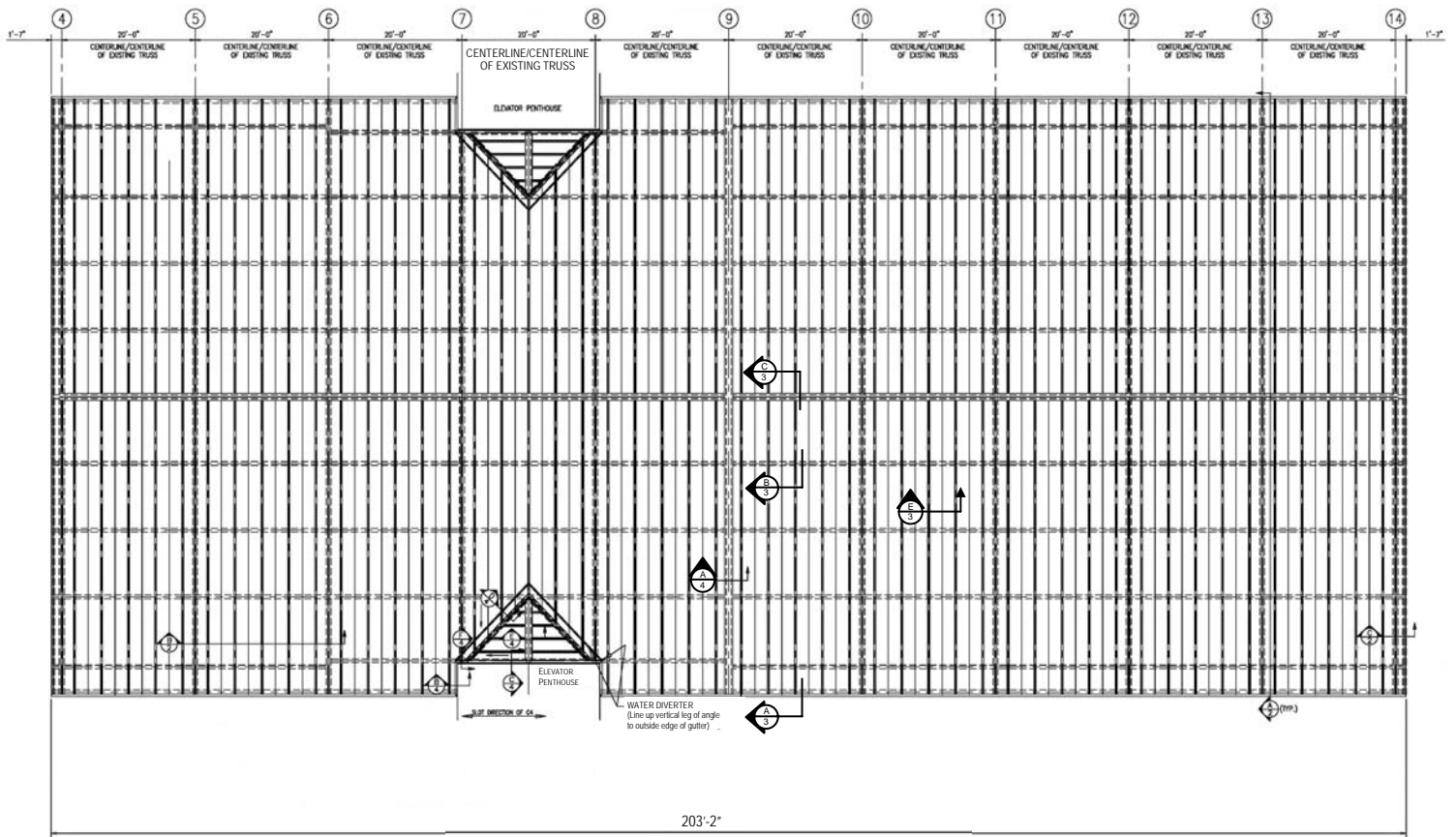
Today, the atrium is a warm beacon of daylight for the building. The matte finish on CPI's Quadwall translucent glazing system allows occupants to experience the tremendous benefits of daylighting without glare, something that has created a healthier and more productive work environment at SAS.

"SAS' continued success relies on the ability of our employees to excel at extremely creative work," said Pete Flood, construction project manager, SAS. "We learned long ago that happy employees make happy customers – our award-winning reputation as a great place to work is a testament that a positive environment encourages creativity and loyalty, which in turn ensures that our customers are well served. Not only do we now have more light in our atrium and along with watertight integrity, but we have strengthened our relationship with employees and customers by providing an environment in which they can thrive."

*A discolored and deteriorated skylight (bottom photo) was replaced with a Quadwall system (photo above taken during removal and installation) resulting in a dramatically improved work environment with pleasant natural daylighting (top photo).*

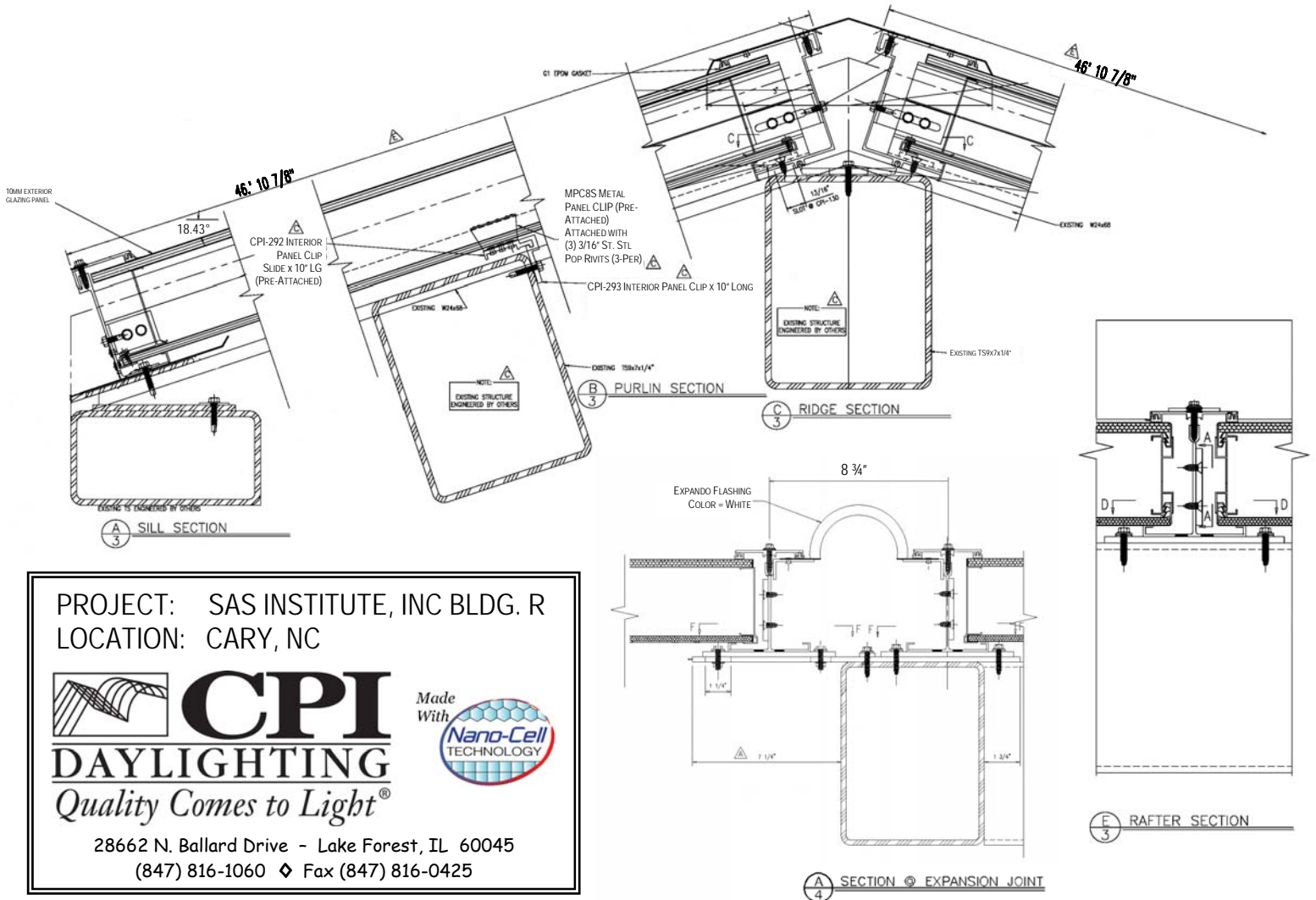
28662 N. BALLARD DRIVE LAKE FOREST, IL 60048  
PHONE: (800) 759-6985 | FAX: (847) 816-0425  
WWW.CPIDAYLIGHTING.COM





Out/Out of Existing Skylight

PLAN VIEW



PROJECT: SAS INSTITUTE, INC BLDG. R  
LOCATION: CARY, NC

**CPI**  
DAYLIGHTING  
Quality Comes to Light®



28662 N. Ballard Drive - Lake Forest, IL 60045  
(847) 816-1060 ♦ Fax (847) 816-0425

SECTION 4 EXPANSION JOINT